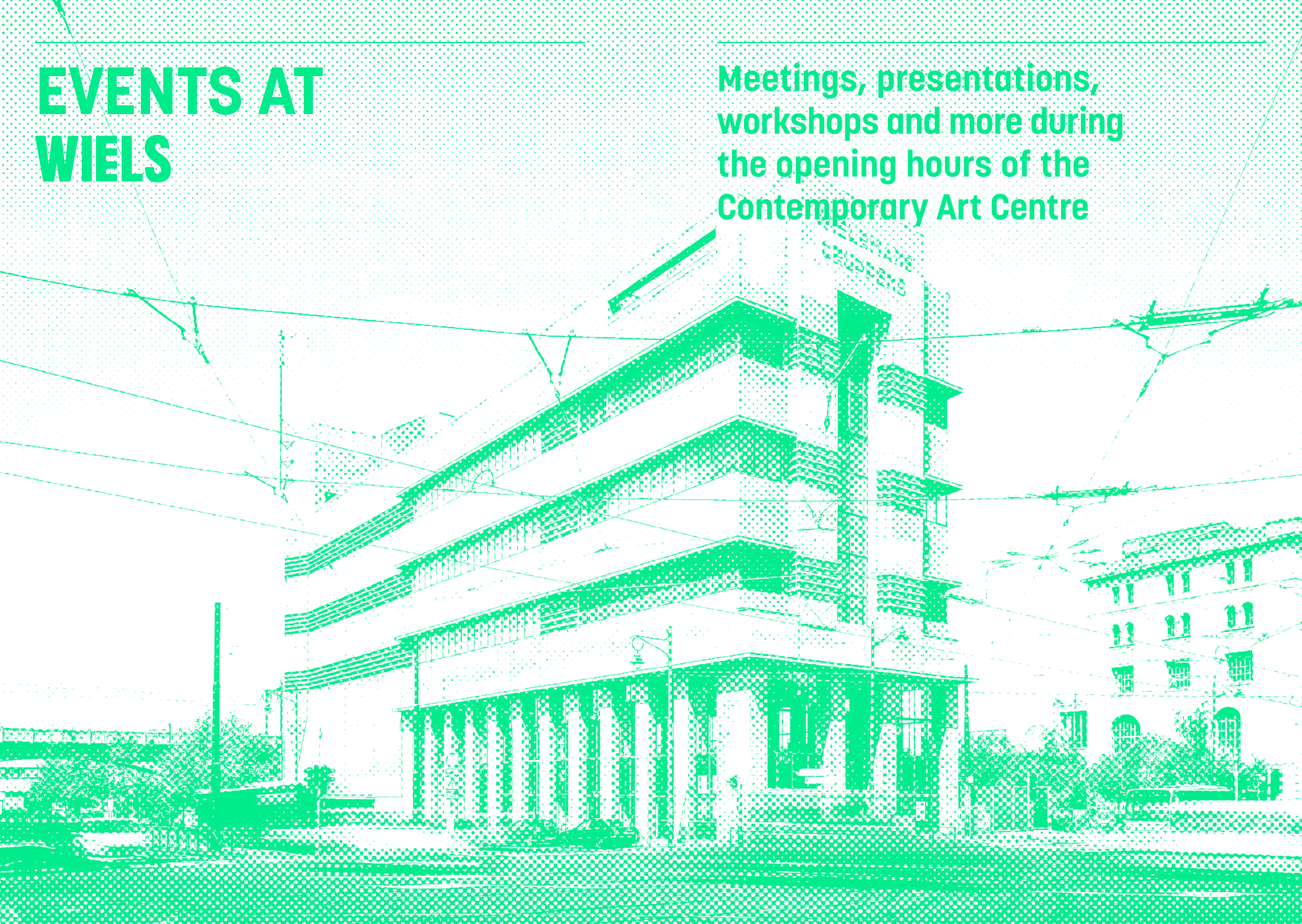


# EVENTS AT WIELS

Meetings, presentations,  
workshops and more during  
the opening hours of the  
Contemporary Art Centre



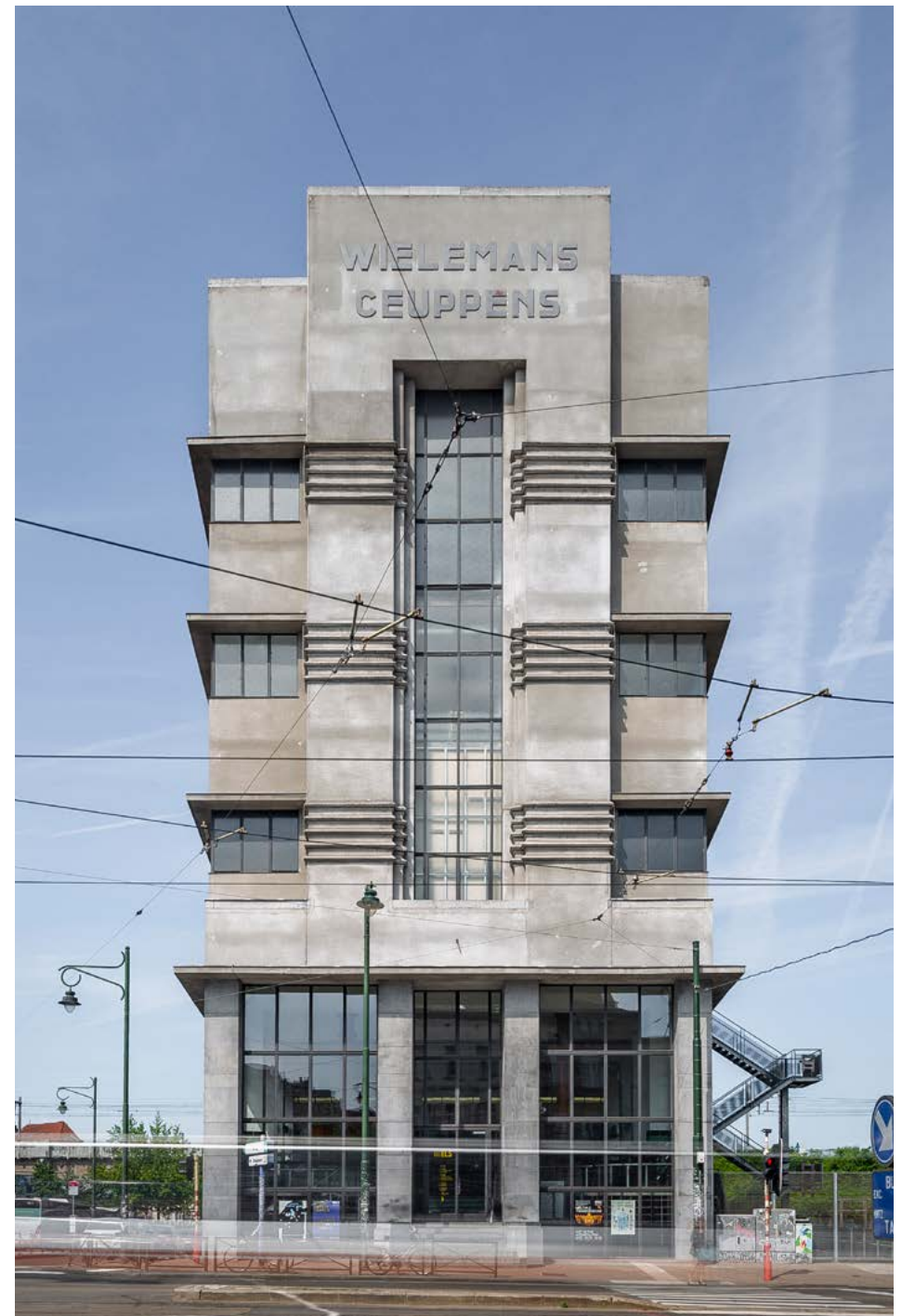


## ABOUT WIELS

WIELS is a place for contemporary visual art, creation and dialogue. Located a stone's throw from Brussels' South Station, housed in an emblematic former brewery, WIELS presents temporary exhibitions by recognised and emerging artists.

WIELS welcomes artists from all over the world in the residency programme each year, and organises many events and creative workshops for diverse audiences. Its ambition is to enrich debate, open new perspectives and stimulate the senses through its audacious programme.

Discover the artistic programme at [WIELS.ORG](https://wiels.org).



Andrea Anoni

## SEMINAR



Alexandra Bertels

This room, situated on the fourth floor with a magnificent view of Brussels, offers an intimate atmosphere. It can accommodate up to 100 people. The room's audio-visual equipment and projection screen are at your disposal. It is accessible by lift.

This polyvalent room is perfect for seminars, meetings, workshops and projections.

[More info & images here.](#)

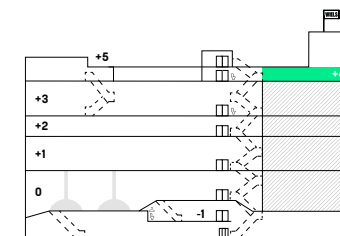


Alexandra Bertels

**Dimensions:** 170 m<sup>2</sup>

**Capacity:** Seated – 40  
Theatre – 85  
Standing – 100

**Price:** € 600 / day (VAT excl)



# AUDITORIUM



Gadea Burgaz



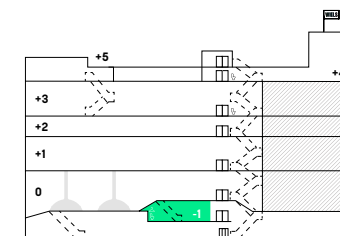
Alexandra Bertels

This space is equipped with technical material, allowing several audio-visual possibilities. The auditorium offers acoustic comfort and is sealed off from any daylight.

It offers the ideal space to host a lecture, seminar, conference, debate or film screening.

[More info & images here.](#)

**Dimensions:** 90 m<sup>2</sup>  
**Capacity:** Theatre – 70  
**Price:** € 600 / day (VAT excl)





## CATERING

During the opening hours of WIELS (11:00-18:00), the WIELS' Café is open for your lunch and coffee breaks.

Reservation necessary for groups with more than 10 persons.

OPTION | Coffee corner in the Seminar/Auditorium

**Contact:** [cafe@wiels.org](mailto:cafe@wiels.org)

 [wiels\\_café](https://www.instagram.com/wiels_cafe)

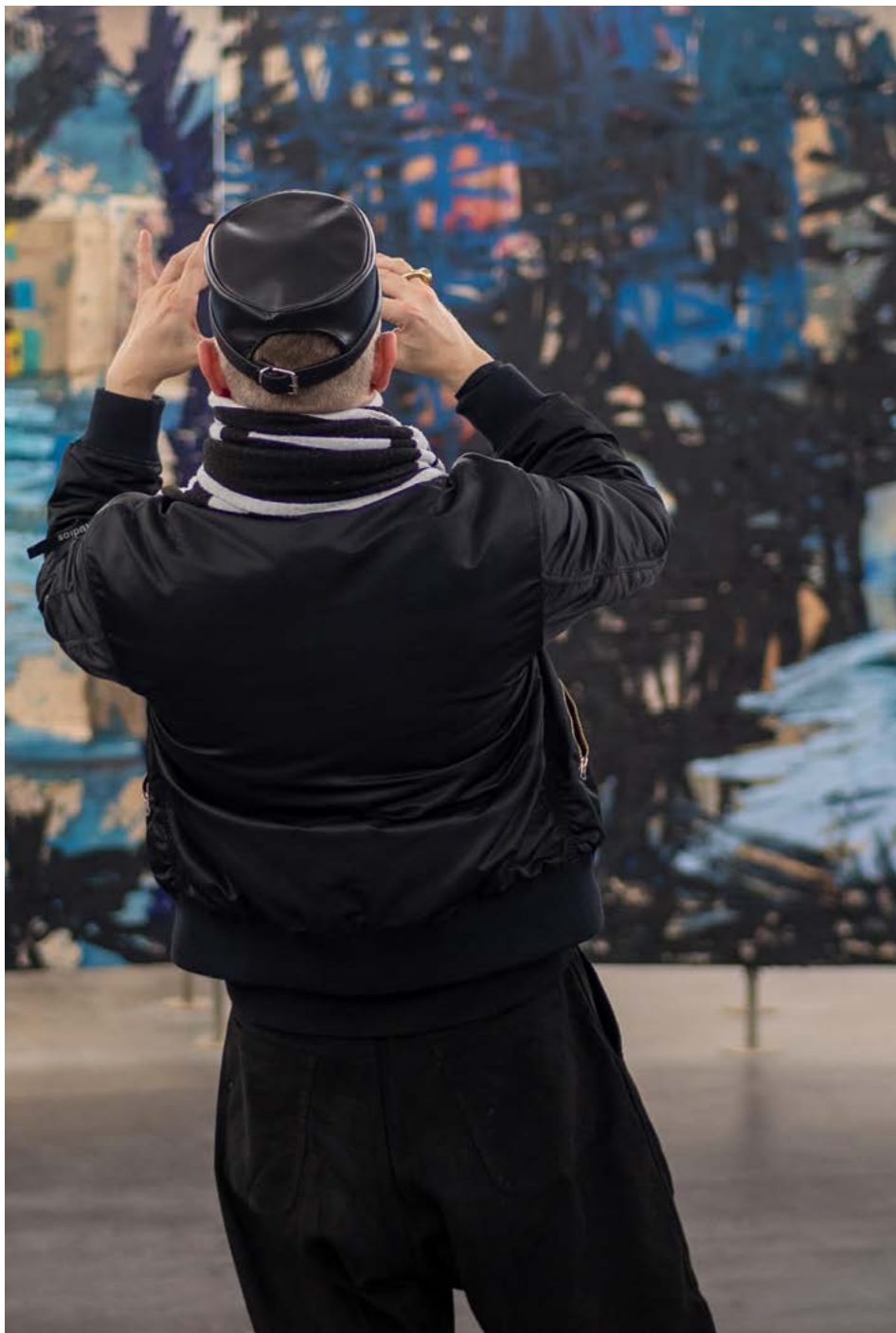


---

## GUIDED TOURS

Combine your event with a visit or guided tour of the exhibitions.

[Book your guided tour here.](#)





Alexandra Bertels

## CONTACT

Contact us for more information on the venue hire possibilities.  
[event@wiels.org](mailto:event@wiels.org)

## ACCESS

Avenue Van Volxemlaan 354  
 1190 Brussels

Parking is available for bikes, cars and buses at the back of the building.

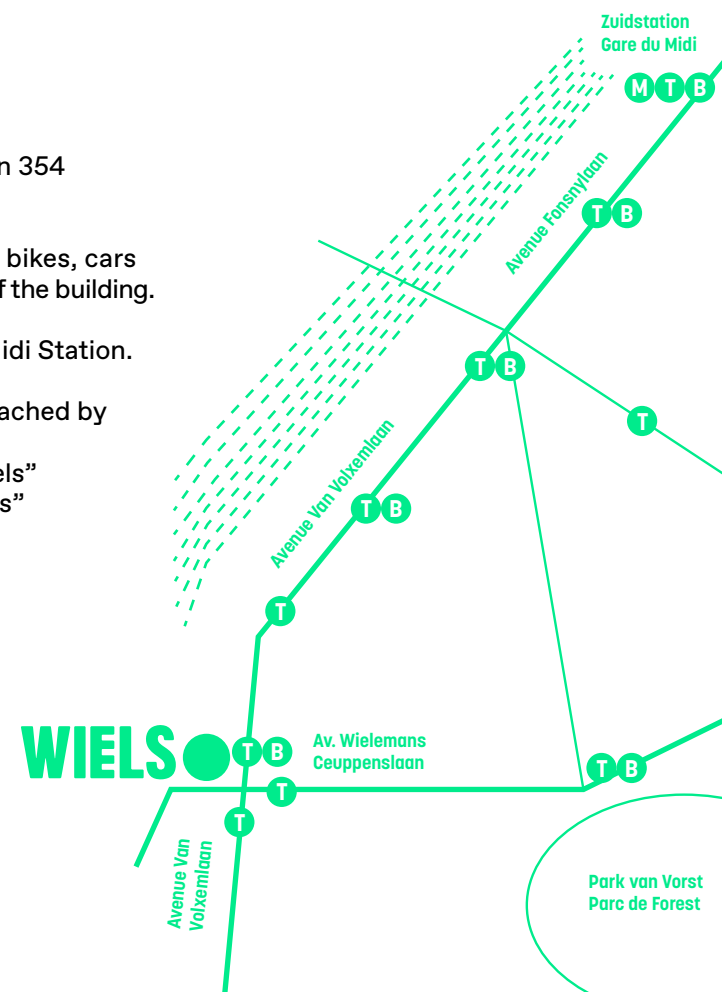
5 min. from Brussels Midi Station.

WIELS can easily be reached by public transport.

**Tram:** 82, 97, stop "Wiels"

**Bus:** 50, 49, stop "Wiels"

**Train:** Brussels Midi





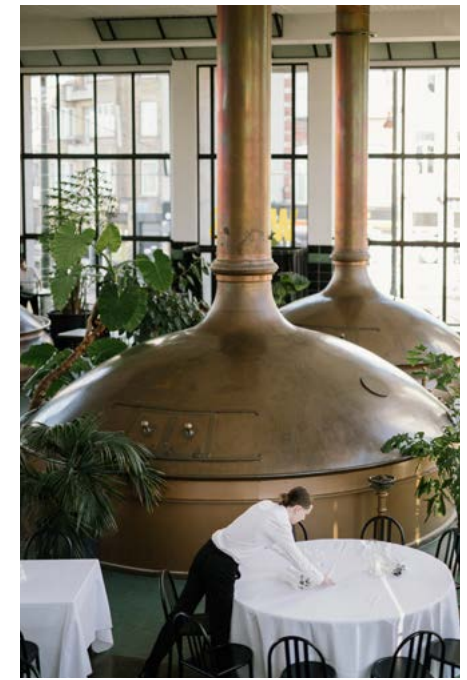
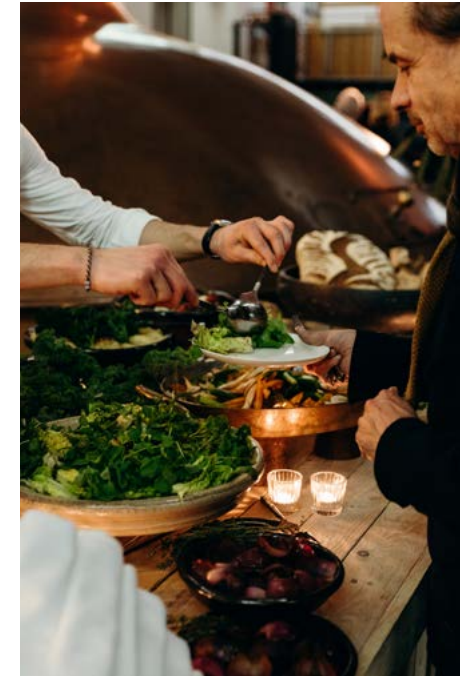
## PRIVATISATION OF WIELS AFTER OPENING HOURS

WIELS is located in the emblematic Art Deco building of the former Wielemans brewery, better known as “The Blomme”. The prestigious building is one of the rare still-standing examples of modernist industrial architecture in Brussels.

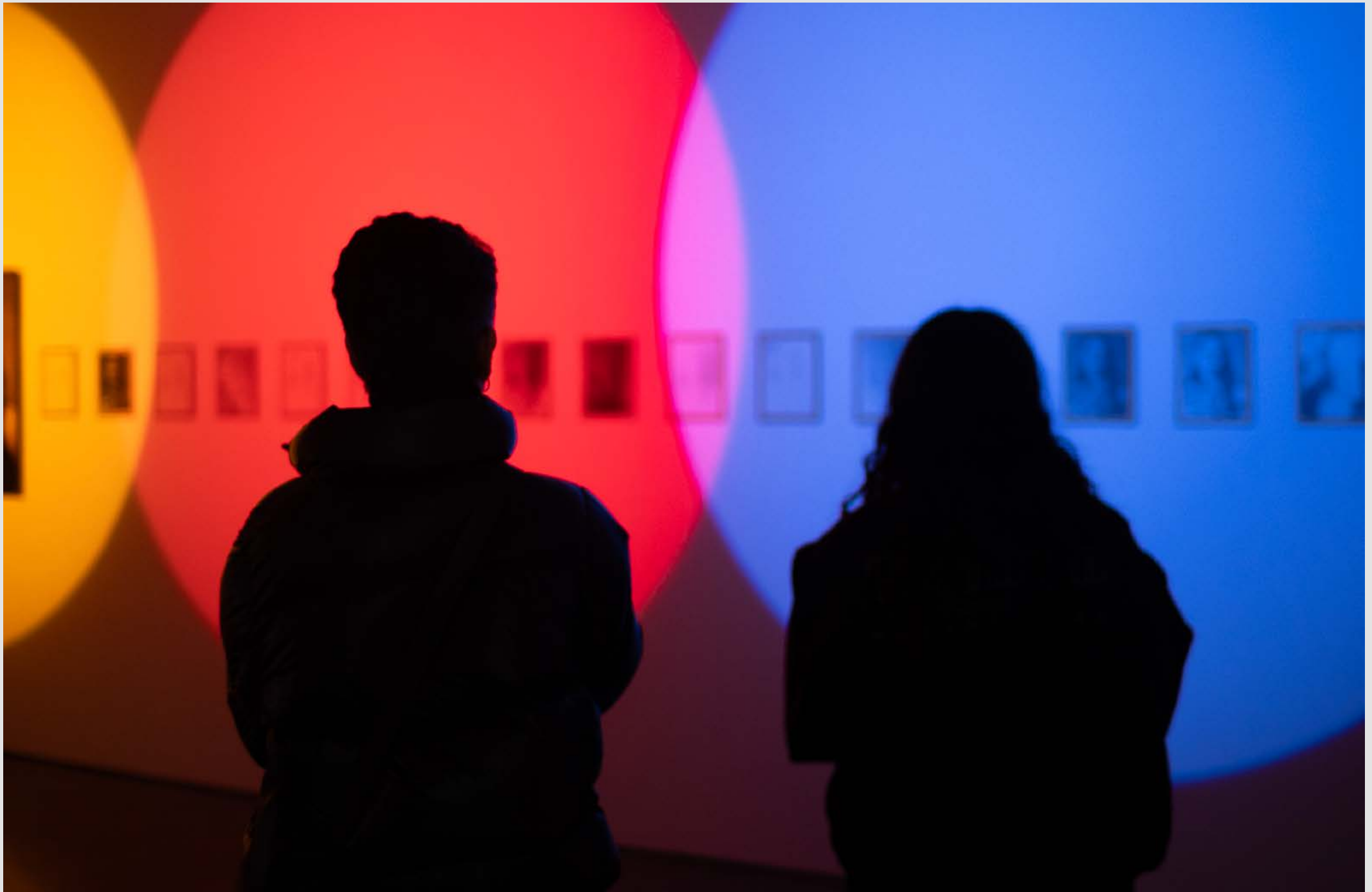
**The privatisation of the WIELS Brewing Hall, in combination with other spaces – such as the auditorium, the seminar room or the rooftop terrace – before or after the opening hours is reserved exclusively for the members of our Business Club, whose contribution is minimum €6,000.**

This budget corresponds to the rental of the space, with the added benefit of being included as a member of the WIELS Business club for the entire year.

Please contact Diane van Impe for more information:  
[diane@wiels.org](mailto:diane@wiels.org)







Aurélie Bayard

**WIELS**